

SKYDECK Aluminium Panelized Slab Formwork

The lightweight and proven slab formwork with short forming times



Edition 10 | 2014

PERI GmbH
Formwork Scaffolding Engineering

Rudolf-Diesel-Strasse 19
89264 Weissenhorn
Germany
Tel. +49 (0)7309.950-0
Fax +49 (0)7309.951-0
info@peri.com
www.peri.com

Important Notes

All current safety regulations and guidelines must be observed in those countries where our products are used.

The photos shown in this brochure feature construction sites in progress. For this reason, safety and anchor details in particular cannot always be considered as conclusive or final. These are subject to the risk assessment carried out by the contractor.

The systems or items shown might not be available in every country.

Safety instructions and load specifications are to be strictly observed at all times. Separate structural calculations are required for any deviations from the standard design data.

The information contained herein is subject to technical changes in the interests of progress. Errors and typographical mistakes reserved.

Content

SKYDECK Aluminium Panelized Slab Formwork

- 2 The lightweight and proven slab formwork with short forming times

Easy handling

- 4 Ergonomically-designed aluminium components

Efficient and rational working operations

- 6 With a systematic assembly sequence and fewer slab props

Early striking thanks to the drophead

- 8 Early striking for minimizing on-site material requirements

Detailed solutions for fast working

- 10 All floor plans can be easily adapted

High level of safety on all sides

- 12 Risk-free and fast working in all situations

Practical range of accessories

- 14 Efficient on-site and yard logistics

Especially robust and durable

- 15 Minimal cleaning requirements and highest product quality

- 16 Components

SKYDECK Aluminium Panelized Slab Formwork

The lightweight and proven slab formwork with short forming times

Working with SKYDECK results in fast as well as safe forming operations with a systematic assembly sequence. The low weight, compact dimensions and design of the system components facilitate non-tiring and ergonomic working operations.

SKYDECK has been designed for standard use in constructing slabs with thicknesses up to 43 cm. With the 75 cm panel width, slabs up to 109 cm thick can be formed. The well thought-out design with drophead allows early striking and reduces on-site material requirements. With SKYDECK, infill

areas are reduced to an absolute minimum. In addition, SKYDECK makes a convincing case with an extensive range of safety and logistics accessories. A further advantage is the easy horizontal transportation of formwork materials due to the low number of props required.





■ **Easy handling**

Effortless working operations and short shuttering times through the lightweight system components; panels and main beams each weighing only 15.5 kg

■ **Early striking thanks to the drophead**

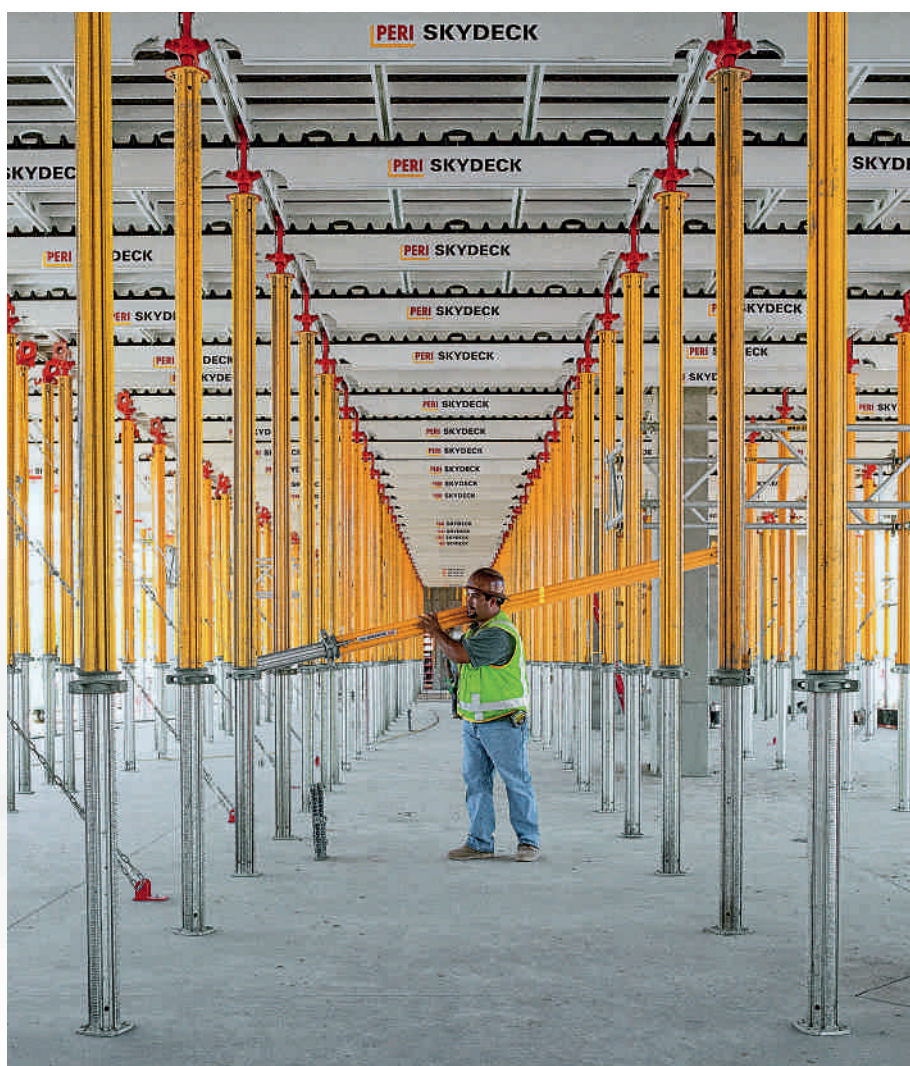
Depending on the slab thickness and strength of the concrete, early striking can take place only one day after concreting

■ **Fast work operations**

Very efficient due to systematic, easy assembly and minimum prop requirements

■ **Easy to clean**

Powder-coated elements, plastic components and undercut panel edges ensure that cleaning is kept to a minimum



Fewer slab props results in plenty of space to move around under the slab formwork. In particular, this facilitates the easy transportation of materials.

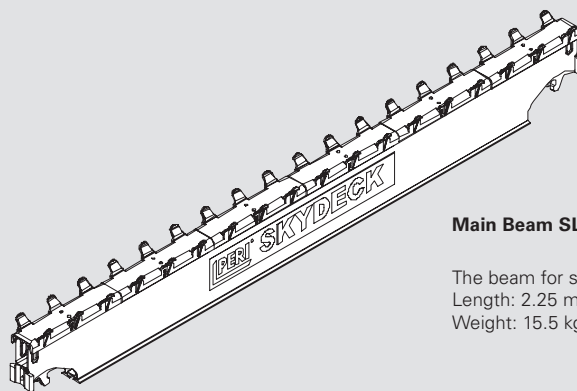
Easy handling

Ergonomically-designed aluminium components

Low individual weights and practical dimensions are distinct advantages in daily formwork operations.

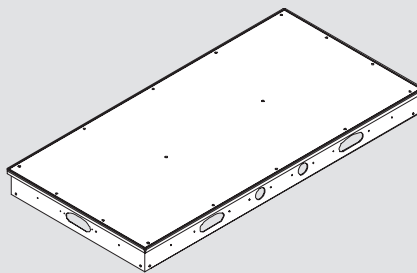
All system components of the SKYDECK aluminium panelized slab formwork system can be moved by just one person. The panels measure only 150 cm x 75 cm and can easily be transported on the construction site – e.g. also through door openings. When carrying the panels, the immediate working area is always in view which avoids any accidents.

During shuttering and striking, the low weight clearly makes a noticeable difference in the work performance. Site personnel do not tire so quickly which increases safety levels in the daily work.



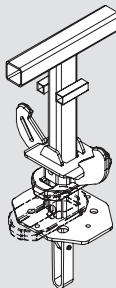
Main Beam SLT 225

The beam for standard fields
Length: 2.25 m
Weight: 15.5 kg



Panel SDP 150 x 75

Panel SDP for the standard field with 9 mm formlining
Dimensions: 1.50 m x 0.75 m
Weight: 15.5 kg



Drophead SFK

Supports main beams as well as cover strips or formlining.
With practical self-locking coupling
Lowering range 6 cm

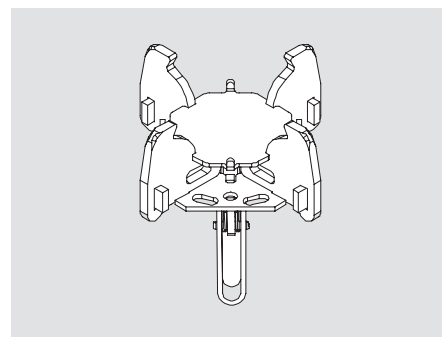
The extremely fast head mounting

Both the SKYDECK drophead and prop head are equipped with a self-locking coupling. Both heads can be connected very quickly and securely to the props – no time-consuming use of screws, bolts or wedges required.

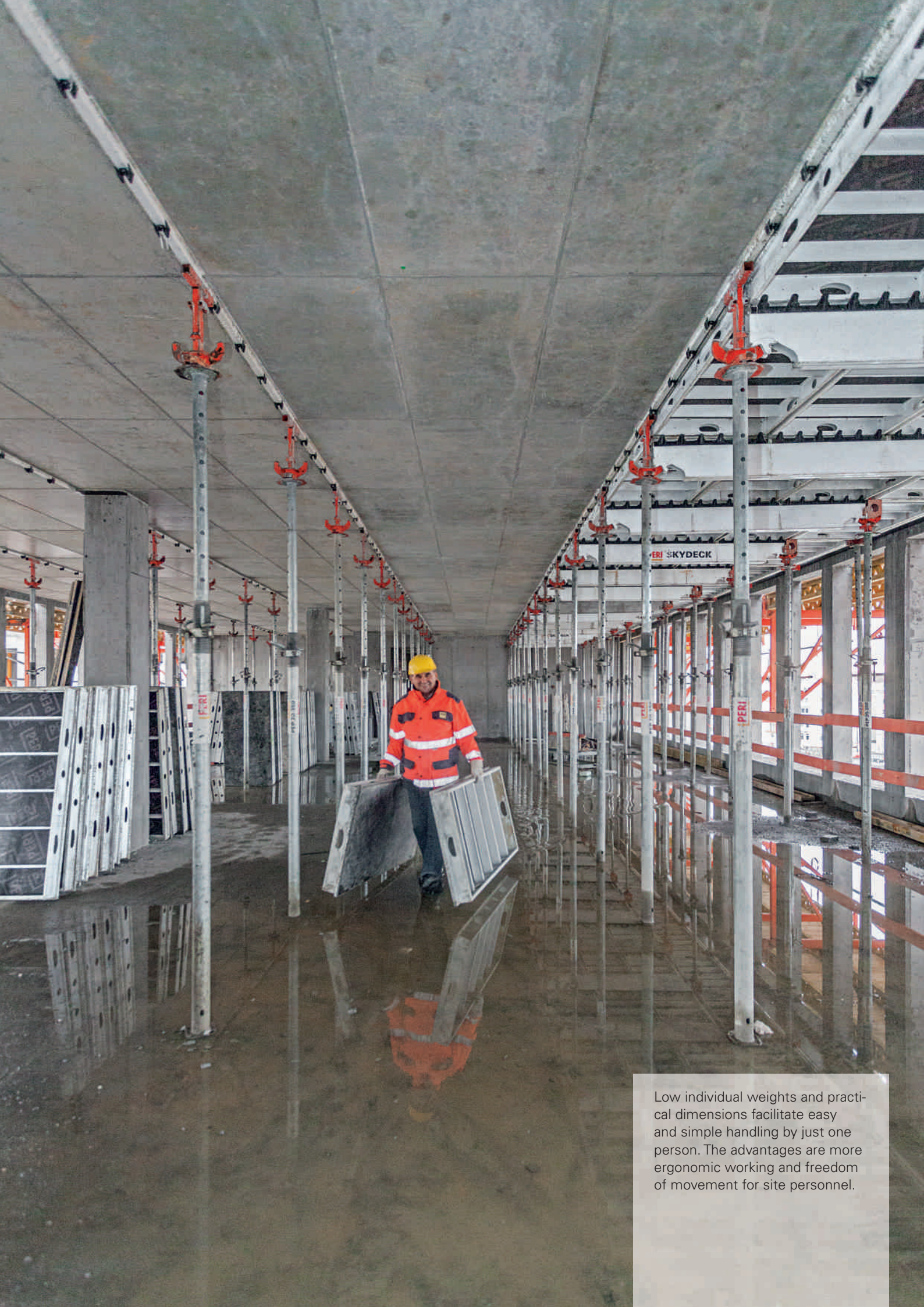
Removal is simply a matter of releasing the coupling and then taking the head off. The props can therefore be changed extremely quickly to suit the different slab heights.



The self-locking coupling: drophead, prop- and combiheads are securely mounted by simply inserting and locking in place. The heads fit all standard slab props with 40 mm hole diameters.



The SKYDECK prophead SSK is the alternative if early striking is not required. It serves to support panels, main and edge beams as well as filler timbers.



Low individual weights and practical dimensions facilitate easy and simple handling by just one person. The advantages are more ergonomic working and freedom of movement for site personnel.

Efficient and rational working operations

With a systematic assembly sequence and fewer slab props

SKYDECK offers a simple, systematic assembly sequence and high degree of installation safety. The recurring procedures accelerate the work and handling is quickly mastered even by personnel unfamiliar with the system.

Shuttering standard fields is very simple: after attaching the SLT Main Beams to the drop or prop head, the prop is vertically positioned. The panel is secured in position during assembly by the outwardly projecting teeth of the main beams. The SKYDECK system provides working safety during erection.

The SKYDECK system facilitates fast and easy assembly

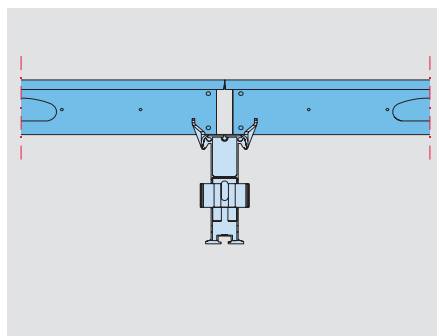
- Slab props no longer need to be set out
- No need to determine primary and secondary beam spacings
- No taking into account the load-bearing capacity of the formlining as this has been dimensioned for slab thickness up to 109 cm



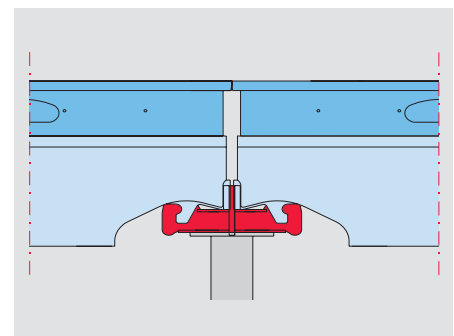
The outwardly projecting “holding and fixing” teeth of the main beam secure the panel against falling out or slipping. This provides a high level of safety during forming operations.



Cross-section of the main beam:
The panels are secured automatically by the lugs on the main beam.



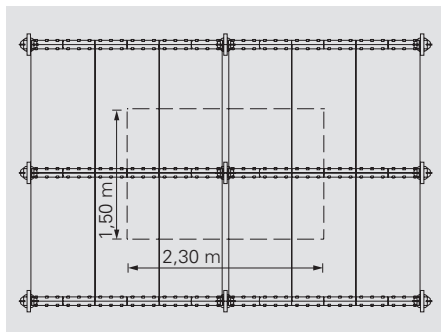
View of the main beam:
The main beam is mounted rigidly on the drophead or prophead and cannot tilt.



Thanks to the SKYDECK main beam, only 0.29 props per m² of slab area are required for standard applications.

With the SKYDECK system, one slab prop supports a field size of up to 3.45 m². This saves on both materials and working time. In addition, the large prop spacing provides a comfortably-spaced working area under the slab formwork. This facilitates the transport of formwork materials as well as the storage of construction materials.

The standard field has an area of 3.45 m². Through the Main Beam SLT 225, this means only 0.29 props per m².



With the PERI elevating platform, work on larger slab heights can also be comfortably and safely carried out.

Early striking thanks to the drophead

Early striking for minimizing on-site material requirements

The drophead facilitates early striking – as a result, panels and main beams are quickly made available for subsequent concreting sections.

Depending on the slab thickness and strength of the concrete, striking can be carried out after only one day. This minimizes on-site material requirements because panels and beams can be used earlier for the next cycle. In addition, work on the construction site can also be better compensated; for example, through early striking in bad weather or when there is spare capacity.

Early striking means striking and cleaning is also much easier as the panels separate from the concrete without any effort.

Striking with the drophead

One blow of the hammer releases the drophead; in the process, the formwork is lowered by 6 cm. Main beams and panels can then be struck.

In the field area, the props remain in position together with the dropheads and cover strips. The props in the edge or infill areas can be removed. Around 30 % of the drophead props can be used for the next concreting cycle.

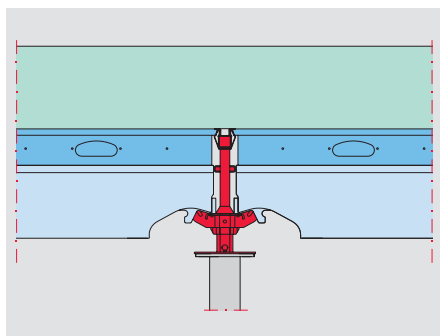
The drophead system in the SKYDECK standard field.



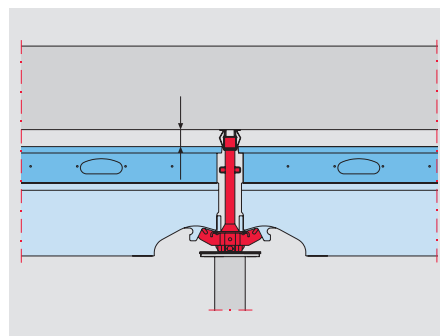
Easy and simple early striking: the formwork is lowered by 6 cm with just one blow of the hammer.



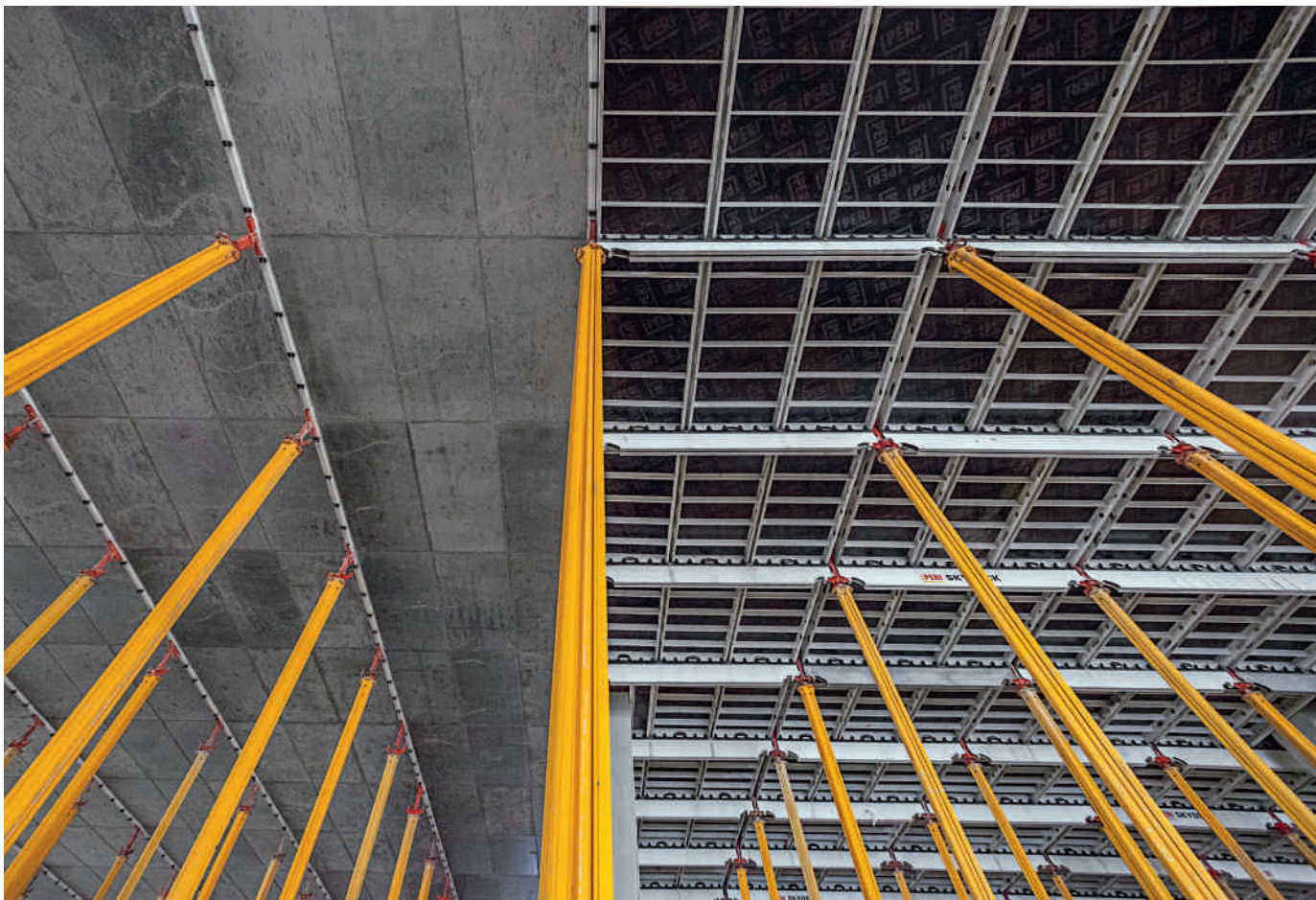
After lowering the dropheads, the central panel is removed first followed by the neighbouring panels.



Shuttered: the panels and cover strips form the soffit of the concrete.



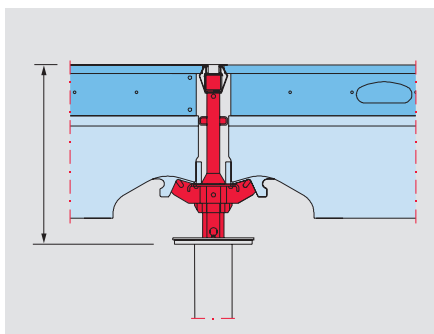
Drophead lowered: the cover strips and dropheads remain in position while the panels and beams are struck.



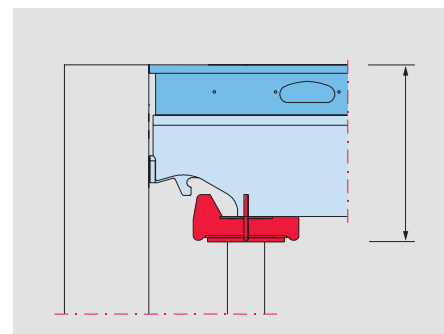
After early striking is finished, only the props with dropheads and cover strips remain in place. SKYDECK panels and beams are available for use in the next cycle.

An important application advantage:

The extended length of the prop remains the same regardless of whether working in the standard field with the drophead, or the prophead drawn back at the wall junction.



Drop Head



Prophead set back at the wall junction.

Detailed solutions for fast working

All floor plans can be easily adapted

Using SKYDECK results in a straight formwork line which simplifies edge adjustment. Gaps can be closed quickly; likewise, shuttering around columns is easy to carry out.

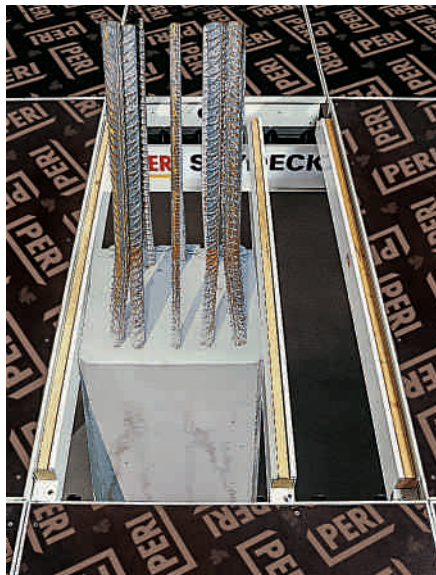
If the slab formwork has to be adjusted to suit any project-specific geometries, SKYDECK offers practical and fast solutions. Both straight and inclined infill areas at the slab edges as well as areas with columns under construction can be quickly closed.



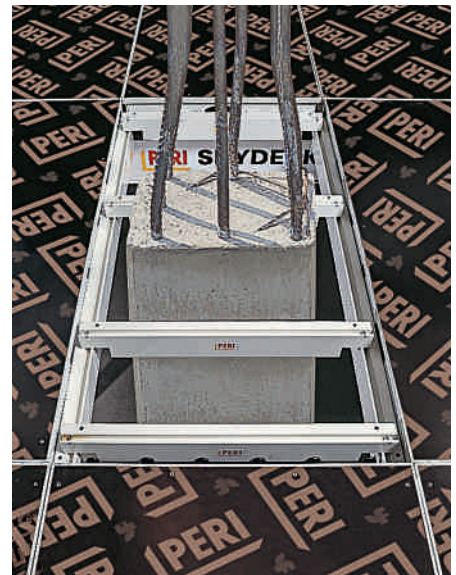
For shuttering of columns, SKYDECK Edge Beam SRT 150 or SRT 75 are used. The maximum edge length of the column – depending on the edge beams used – is 138 cm or 63 cm.

For shuttering columns under construction, edge beams are used longitudinally or transversely.

The edge beams with lengths of 150 cm and 75 cm respectively can be installed anywhere within a panel field.



If the edge beams are used longitudinally as well as transversely, they must be installed upside down.



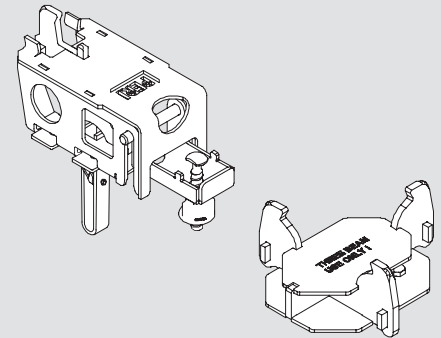
Different head versions allow a change of direction of the SKYDECK main beams – and therefore also the panels.

For an easy and simple change in direction of the main beams, PERI has developed two different head versions. The change in direction can be implemented using both the drophead and the prop-head versions.

The change in the beam direction provides significantly more flexibility for adapting the slab formwork to match more complex layouts.

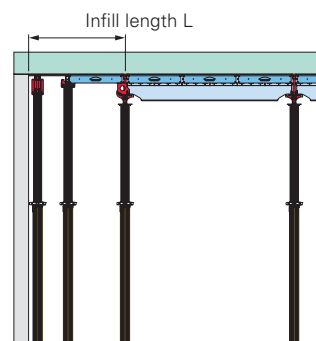


The heads for the change of direction serve as support for the main beams which in turn allows the 90° change in direction.

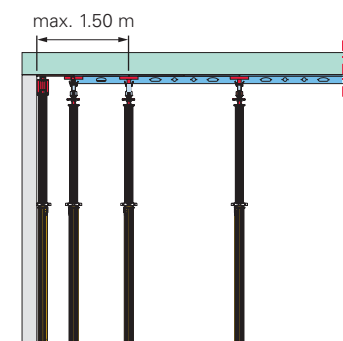


Length and width compensation in front of walls under construction

Length and width adjustments are made where possible with system components. The remaining small compensation areas are closed using filler plates.



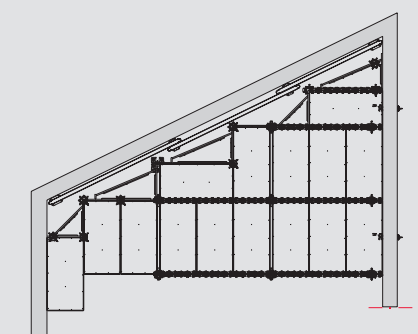
Example of width compensation



Example of length compensation

Compensation for inclined walls

For compensation against inclined walls, triangular frames are available in different dimensions. These are supported on main beams, prop- or combiheads as well as end supports, and closed using a support on the wall side and formlining provided by the contractor.



High level of safety on all sides

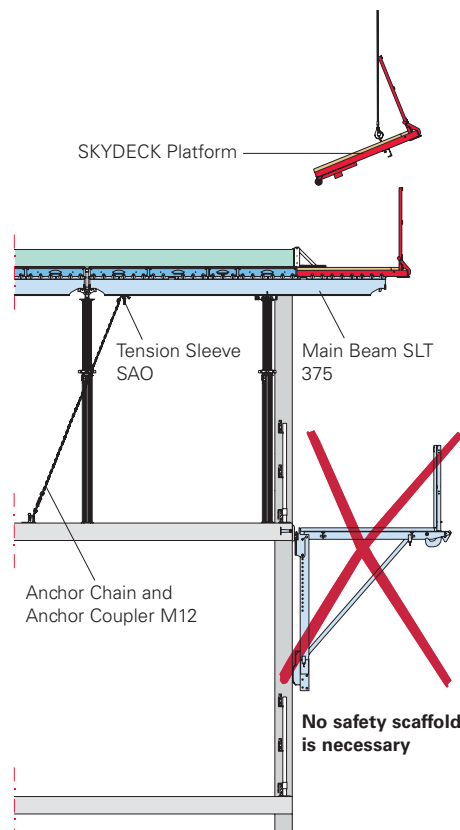
Risk-free and fast working in all situations



The SKYDECK platform ensures safe working conditions at the slab edges.

At the edge of the building, the use of the SKYDECK platform means no safety scaffold is required in the storey below. After positioning, the platform is immediately secured against tipping or moving. It has been designed for a permissible load of 150 kg/m².

The Edge Beam SLT 375 serves as a support for the platform; it is to be secured by means of a chain.



The SKYDECK platform provides optimal safety at slab edges. After a simple positioning procedure, it is immediately fixed against tipping or moving.

Only one day after concreting the slab, the SKYDECK platform serves as safety scaffold for working on structural columns and parapets – this saves on materials, workload and construction time.



The SKYDECK platform is GS-approved. It is mounted complete with guardrails with site personnel in a safe position.

End guardrails with 75 cm or 150 cm widths prevent falling on the front side.

The guardrail units can be easily attached anywhere on the main beam - without requiring any additional fastening means. Due to a cleverly-devised mechanism, the guardrail locks in position automatically.



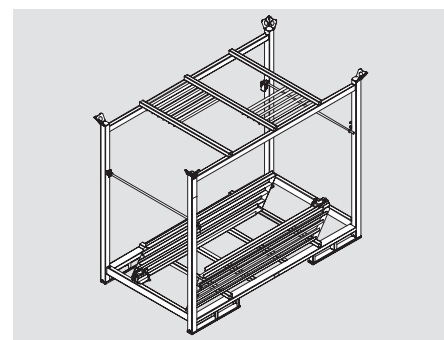
The complete guardrail unit can be mounted quickly and safely with one hand – no additional components or tools are required.



Guardrail unit with a width of 150 cm in use.



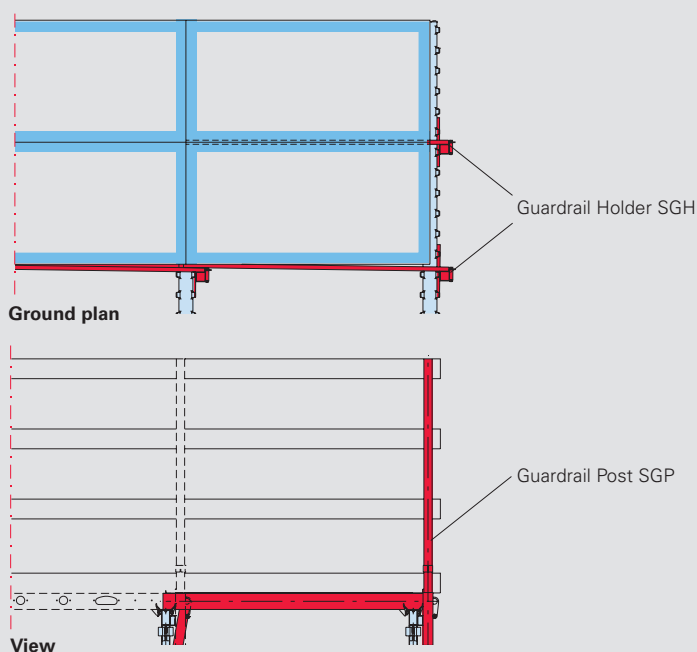
The guardrail units provide end-to-end safety on the front side of the SKYDECK.



Suitably-designed pallets for the guardrail units ensure easy transportation and safe storage. The pallets are space-saving stackable.

Guardrail holders and guardrail posts provide fall protection at a cycle join.

The Guardrail Holder SGH can be continuously mounted between the panels. Supplemented by Guardrail Posts SGP and side protection boards, protection against falling along the open edges of the concreting section is realized.



Practical range of accessories

Efficient on-site and yard logistics

All work on the construction site is made easier and more efficient if there is orderliness and materials can quickly be made available.

With the appropriate pallets, SKYDECK panels are stored and transported safely in a space-saving manner. The SKYDECK pallets can be lifted with the crane or moved by means of a pallet lifting truck. The pallet is equally suitable for forklift trucks when dispatching or in the yard. All SKYDECK pallets are stackable as well as being completely galvanized.

In Pallet SD 150, 48 panels can be stacked and transport very compactly; this corresponds to an area of 54 m².



The SKYDECK Pallet SD can accommodate 14 panels 150 x 75. The pallet lifting truck is used for moving operations.



Suitable pallets are also available for the props. Using the Pallet RP 80 x 120, 25 MULTIPROP props can be moved safely and quickly at one time.

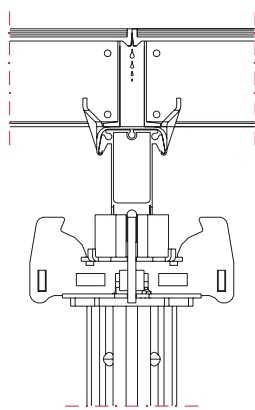
Especially robust and durable

Minimal cleaning requirements and highest product quality

The SKYDECK slab formwork system has been designed in all respects to ensure that only minimum cleaning effort is required. This guarantees additional time-savings.

SKYDECK panels and main beams have self-draining edges as well as undercut panel edges. As a result, the side surfaces of the panels remain cleaner. In particular, if the drophead system is used and early striking takes place,

cleaning requirements are kept to a minimum. In addition, the main beam is powder-coated and the rack is made of plastic. This, too, prevents adhesion of the concrete.



During concreting operations, the main beam lies protected under the SKYDECK panels. Furthermore, ...

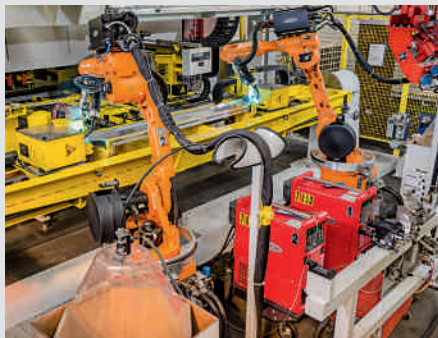


... the main beam is powder-coated and the rack is made of plastic. This prevents adhesion of the concrete and minimizes cleaning requirements. Self-draining edges ensure less dirt remains on the panels.

The high PERI production quality ensures the robustness of the components as well as a long service life. All processes from purchasing through to delivery are subject to continuous quality assurance.

At PERI, quality begins with the careful selection of materials. Specially-trained personnel manufacture system components of the highest quality using state-of-the-art production equipment. PERI has long years of experience

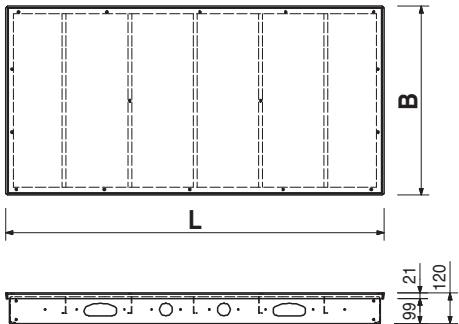
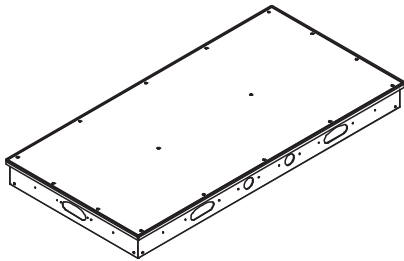
especially in aluminum processing and powder coating. All this ensures excellent production results and robust system components that can stand up extremely well to the tough conditions encountered on the jobsite.



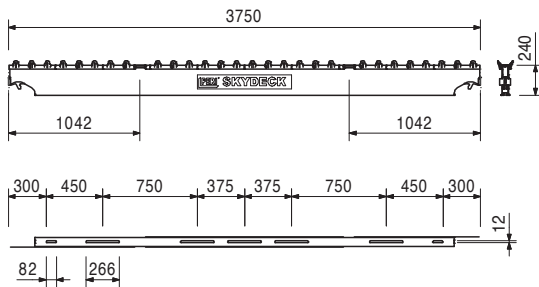
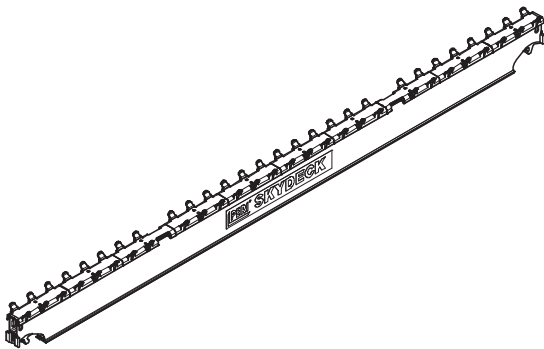
SKYDECK Panel Slab Formwork



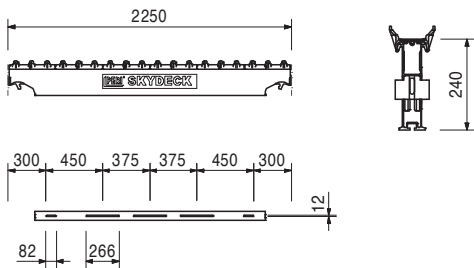
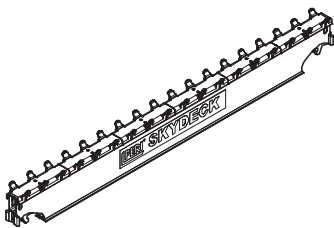
Item no.	Weight kg		L	B
061000	15.500	Panels SDP		
061011	11.700	Panel SDP 150 x 75	1500	750
061020	9.780	Panel SDP 150 x 50	1500	500
061010	8.560	Panel SDP 150 x 37.5	1500	375
061013	6.350	Panel SDP 75 x 75	750	750
061013	6.350	Panel SDP 75 x 50	750	500
061030	5.250	Panel SDP 75 x 37.5	750	375
Panel with 9 mm plywood.				



061160	25.700	Main Beam SLT 375 For cantilevers.
--------	--------	--

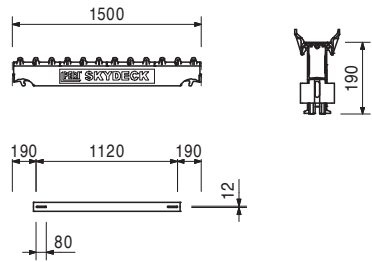
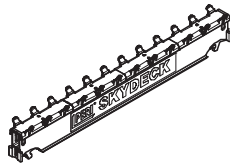


061100	15.600	Main Beam SLT 225 For standard fields.
--------	--------	--



Item no.	Weight kg
061110	9.690

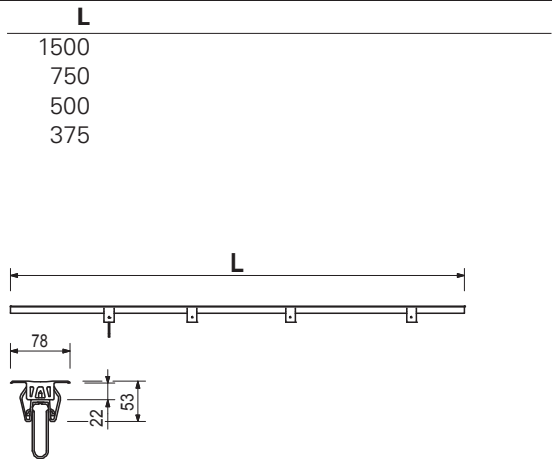
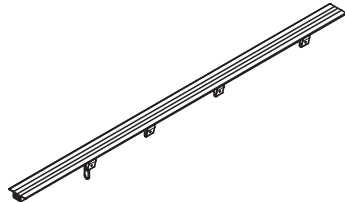
Main Beam SLT 150
For filler areas.



061026	1.580
061027	0.794
061024	0.524
061038	0.400

Cover Strips SAL
Cover Strip SAL 150
Cover Strip SAL 75
Cover Strip SAL 50
Cover Strip SAL 37.5

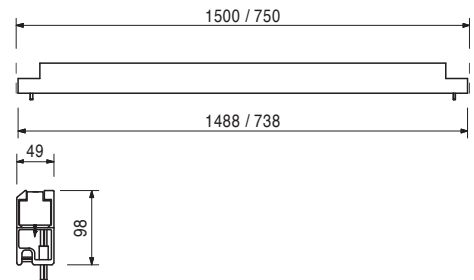
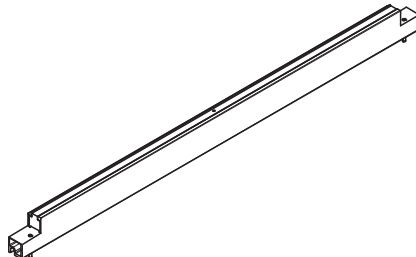
Plastic. Panel with 21 mm plywood. For use with drophead SFK.



061045	5.740
061046	2.720

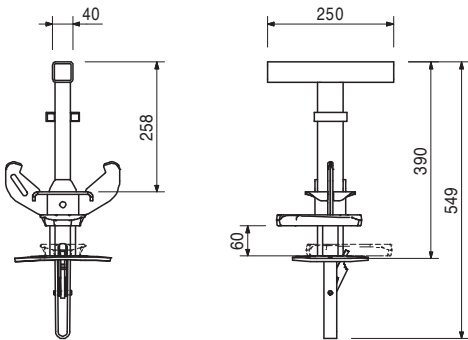
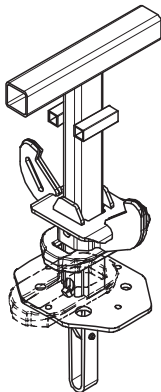
Edge Beams SRT-2
Edge Beam SRT-2 150
Edge Beam SRT-2 75

For longitudinal and transverse filling, for shuttering around columns.
Panel with 21 mm plywood.



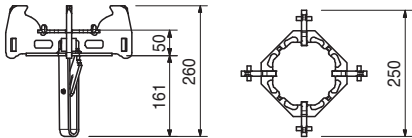
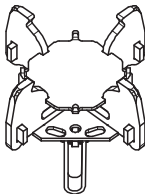
Item no.	Weight kg
061210	6.180

Drophead SFK
With self-locking coupling. Supports main beam as well as cover strip and formlining. Lowering height 6 cm. For 21 mm plywood formlining.



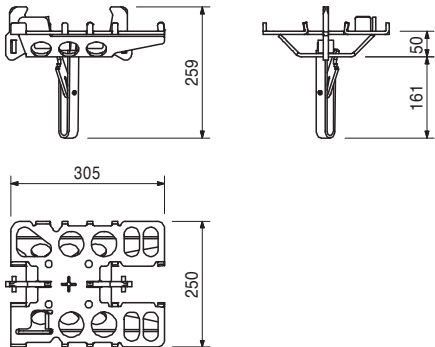
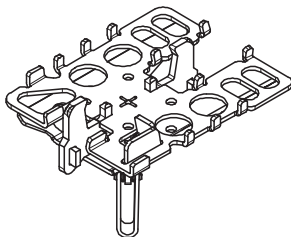
061200	3.860
--------	-------

Prophead SSK
With self-locking coupling. Supports main beams, panels, edge girders and filler timber.



061180	5.340
--------	-------

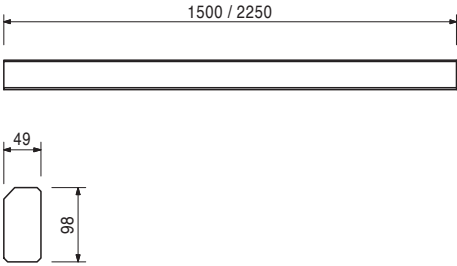
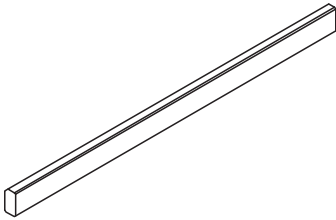
Combihead SCK
With self-locking coupling. Supports main beams, panels, edge girders and filler timber.



Item no.	Weight kg
061049	3.350
061036	5.020

Filler Timbers SPH
Filler Timber SPH 150
Filler Timber SPH 225

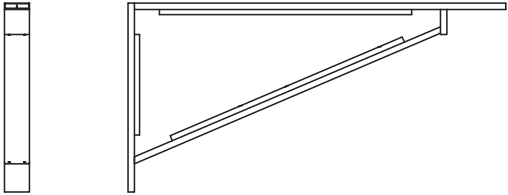
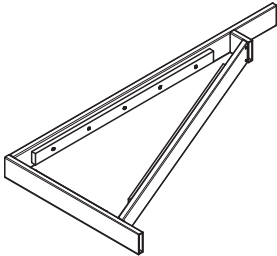
For compensations with 21 mm plywood formlining.



061021	8.660
061022	5.350

Triangular Frames SDR
Triangular Frame SDR 150 x 75
Triangular Frame SDR 75 x 75

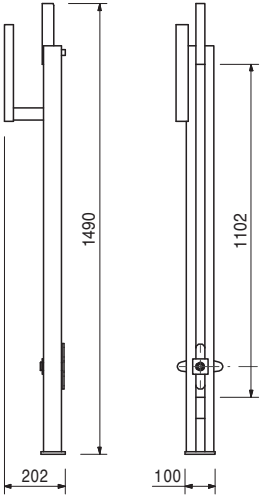
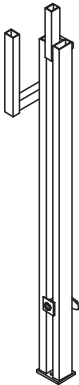
For compensations on inclined walls. For compensations with 21 mm plywood formlining.



061051	5.250
--------	-------

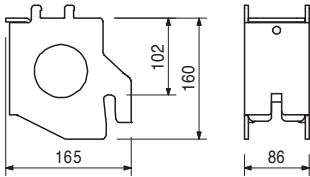
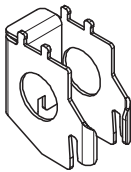
Wall Holder SWH-2

For horizontal anchoring at the wall. Attach to every second girder or panel.



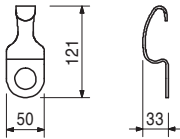
Item no.	Weight kg
061023	2.140

End Support SSL
To be used as compensation to the filler area and to be fixed to the drophead SFK.



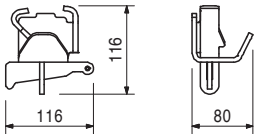
061290	0.133
--------	-------

Panel Clip SPK
Fixes panel on main beam.



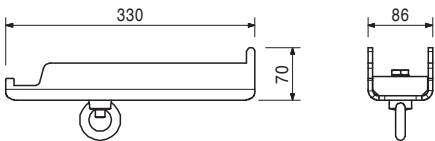
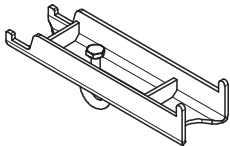
061280	0.778
--------	-------

Panel Wedge Clip SPKK
Fixes panel on main beam.



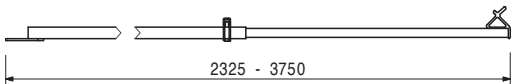
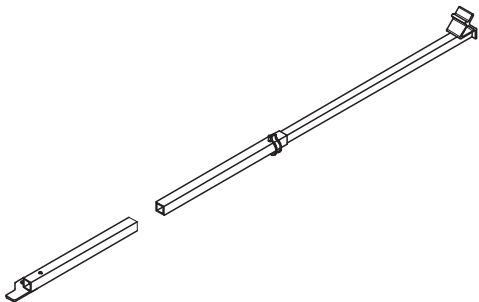
061052	2.590
--------	-------

Table Connector STV
For assembling SKYDECK Slab Tables. Also allows the fixing of intermediate props at the main beam.

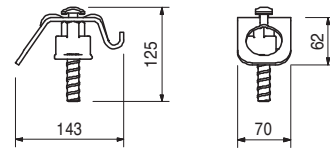


061300	2.240
--------	-------

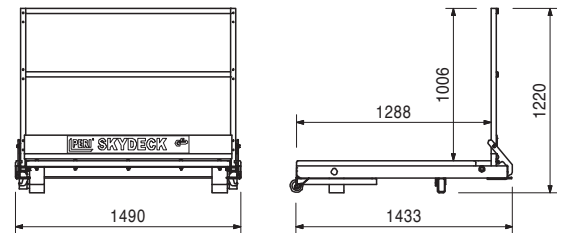
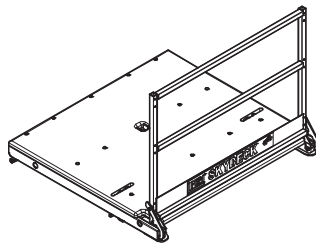
Erection Aid SSH
For forming with SKYDECK. Adjustable in 7.5-cm-increments.



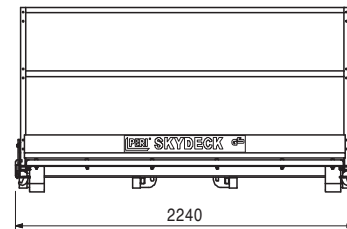
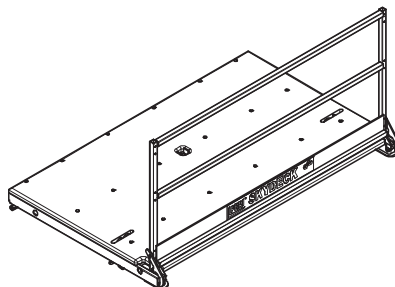
Item no.	Weight kg		
061310	0.996	Tension Sleeve SAO	Technical Data
		For bracing cantilevered main beams.	Permissible tension force 3.0 kN.



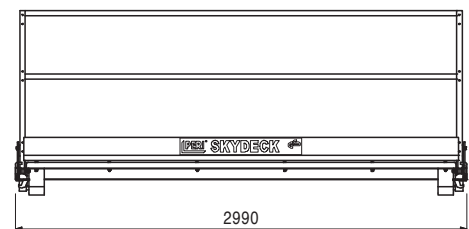
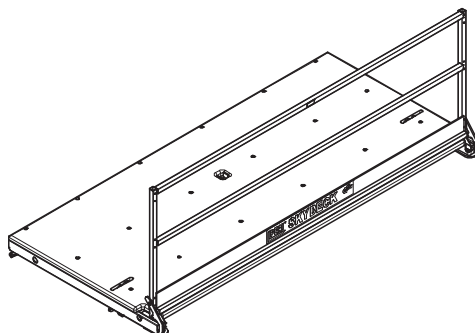
061060	108.000	Platform SDB 150	Technical Data
		Work and safety scaffold. Scaffold width 1.30 m. With continuous 39 mm thick decking and foldable handrail frame.	Permissible load 150 kg/m ² .



061061	153.000	Platform SDB 225	Technical Data
		Work and safety scaffold. Scaffold width 1.30 m. With continuous 39 mm thick decking and foldable handrail frame.	Permissible load 150 kg/m ² .



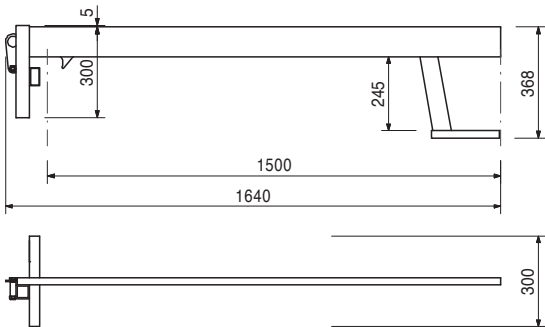
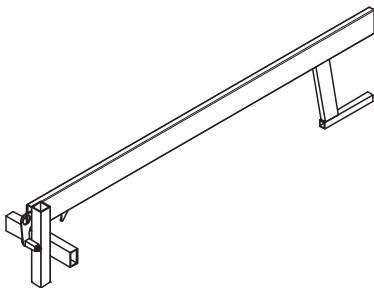
061062	185.000	Platform SDB 300	Technical Data
		Work and safety scaffold. Scaffold width 1.30 m. With continuous 39 mm thick decking and foldable handrail frame.	Permissible load 150 kg/m ² .



Item no.	Weight kg
061250	4.760

Guardrail Holder SGH, Alu
For assembling a guardrail with SKYDECK.

Technical Data
Maximum width of influence 1.55 m.

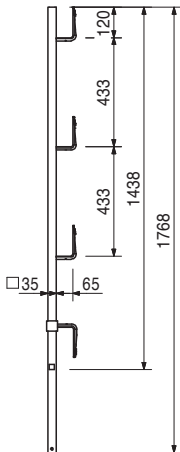


061260	6.150
--------	-------

Accessories
Guardrail Post SGP

061260	6.150
--------	-------

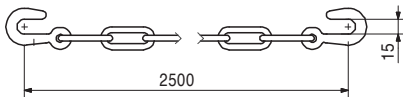
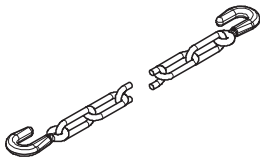
Guardrail Post SGP
As guardrail for different systems.



065073	1.370
--------	-------

Anchor Chain 3.0 kN, l = 2.5 m

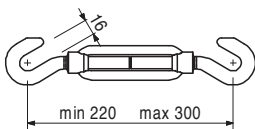
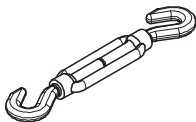
Technical Data
Permissible tension force 3.0 kN.

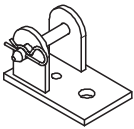
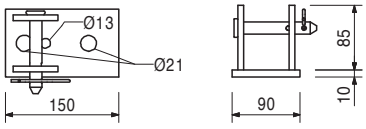
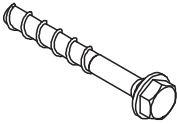
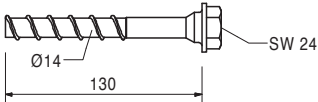
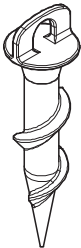
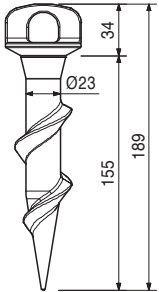


065074	0.450
--------	-------

Turnbuckle 3.0 kN, M12

Technical Data
Permissible tension force 3.0 kN.



Item no.	Weight kg		
028100	1.830	Base Plate for RS For assembly of RS Push-Pull Props.	Complete with 1 pc. 018050 Pin Ø 16 x 65/86, galv. 1 pc. 018060 Cotter Pin 4/1, galv.
			
124777	0.210	Anchor Bolt PERI 14/20 x 130 For temporary fixation to reinforced concrete structures.	Note See PERI data sheet! Drilling Ø 14 mm.
			
123970	0.047	Screw-On Sleeve PERI M16/164 For temporary mounting of components on reinforced concrete slabs.	Note Inserted into the fresh concrete immediately after concreting.
			
123973	0.240	Accessories Bolt ISO 4014 M16 x 130-8.8, galv.	

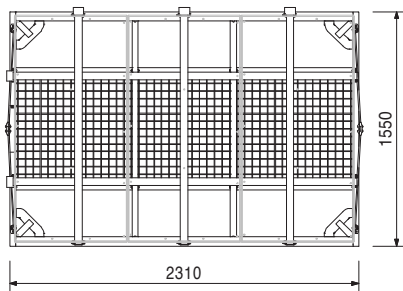
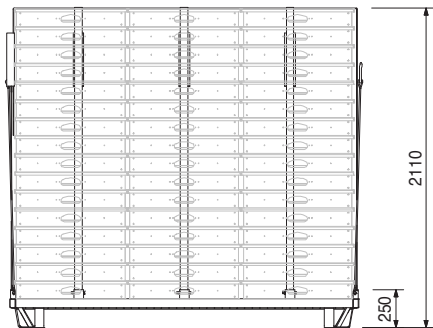
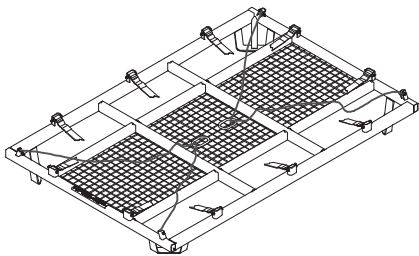
SKYDECK Panel Slab Formwork



Item no.	Weight kg
061530	82.400

Pallet SD 150 x 225, galv.
For stacking and transportation of 48 SKYDECK Panels 150 x 75.

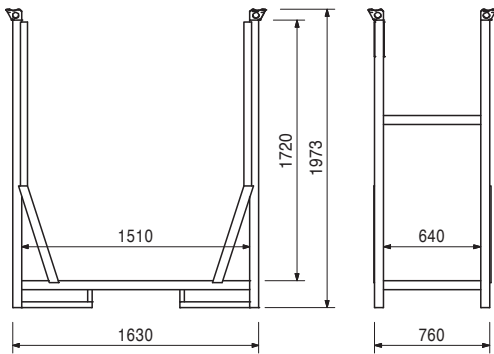
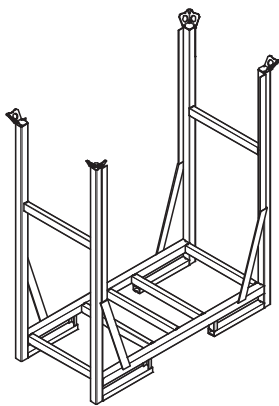
Complete with
5 pc. 100707 Lashing 25 x 5750 mm
Note
Follow Instructions for Use!
Technical Data
Permissible load-bearing capacity 750 kg.



061500	76.700
--------	--------

Pallet SD 150 x 75, galv.
For stacking and transportation of 14 SKYDECK Panels 150 x 75.

Note
Follow Instructions for Use!
Technical Data
Permissible load-bearing capacity 1.0 t.

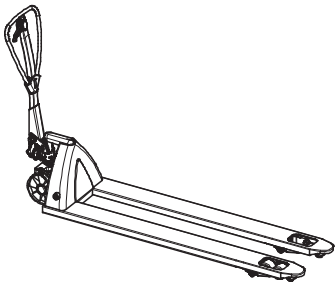


Item no.	Weight kg
061510	105.000

Pallet Lifting Trolley 1800 mm
For moving pallets and crate pallets.

Note
Follow Instructions for Use!

Technical Data
Forklift arm length 1800 mm, forklift arm width 550 mm, stroke range 115 mm.
Permissible load-bearing capacity 2.0 t.

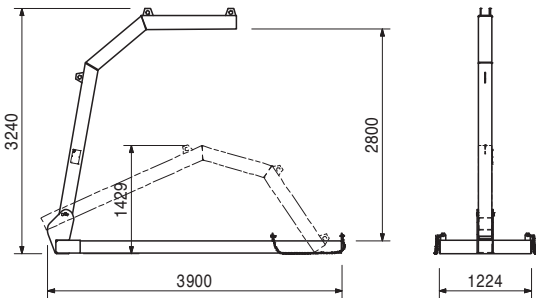
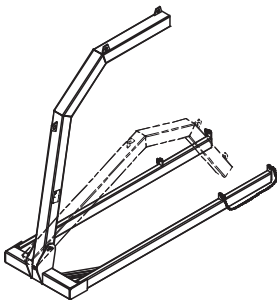


361520	403.000
--------	---------

Transportation Fork SUG, galv.
For moving SKYDECK Slab Tables.

Note
Follow Instructions for Use!

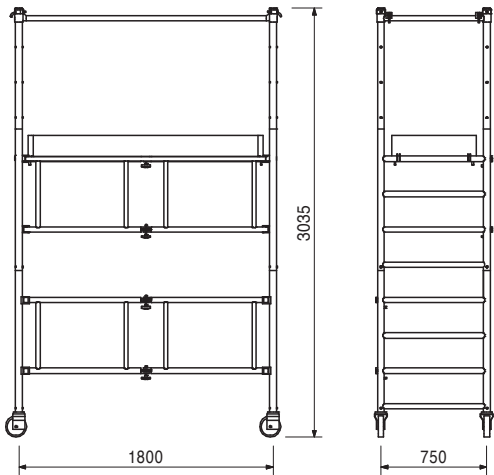
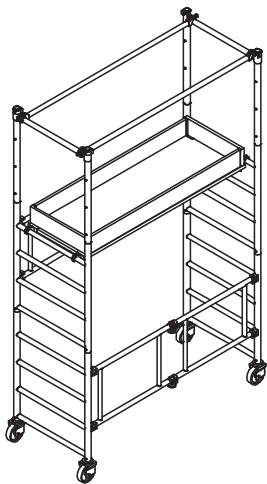
Technical Data
Permissible load-bearing capacity 1.0 t.



Item no.	Weight kg
035500	72.800

Stripping Cart, Alu
Mobile working scaffold. Height-adjustable in 25-cm-increments. Platform height max. 2.00 m.

Note
Follow Instructions for Use!
Technical Data
Permissible load 100 kg/m².



Item no.	Weight kg
102031	363.000

Stripping Cart ASW 465, compl.

Mobile working scaffold. Height-adjustable in 30-cm-increments. Platform height max. 4.65 m.

Packed in:

Ring Pallet USP 104 Item no. 100678, with
Lashing Strap 25 x 5750 Item no. 100707 (x 1)
and Scaffold Tube Steel L = 1000
Item no. 100706 (x 6).

Complete with

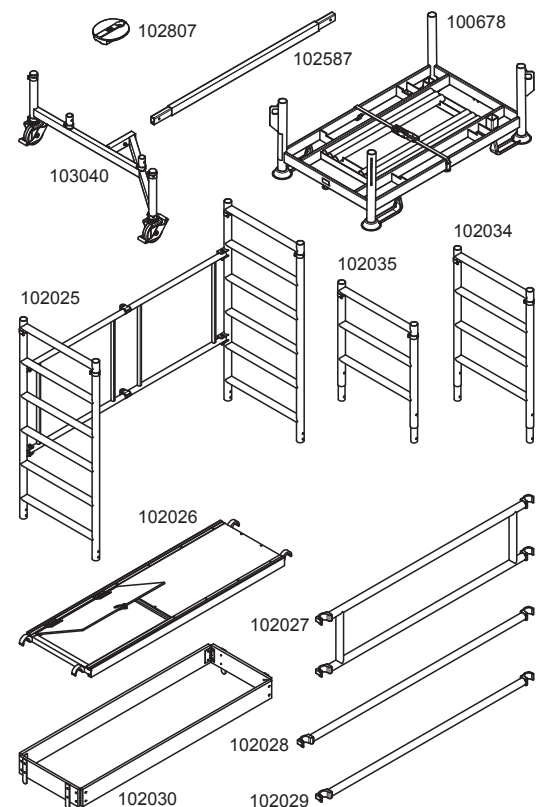
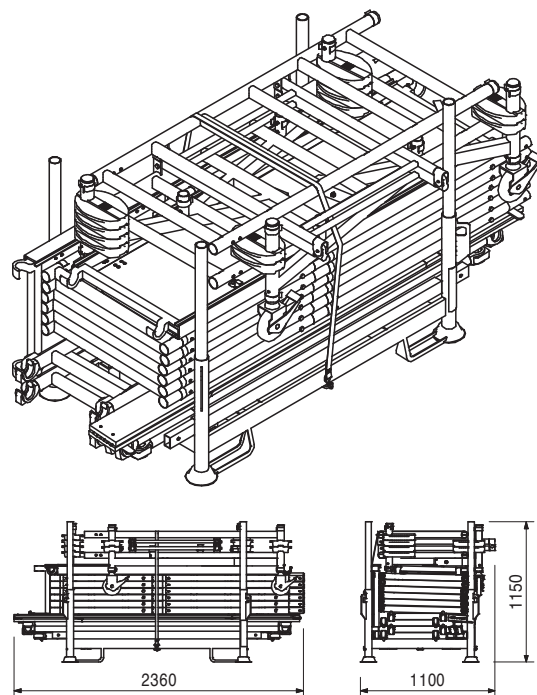
1 pc. 102025 Folding Base Unit 160/190 ASW
6 pc. 102035 Vertical Frame 70/90 ASW
6 pc. 102034 Vertical Frame 70/120 ASW
2 pc. 102026 Entry Platform 190 ASW
1 pc. 102030 Toe-Board Set 70/190 ASW
4 pc. 102027 Double Guardrail 190 ASW
3 pc. 102028 Diagonal Brace 210 ASW
2 pc. 102029 Horizontal Brace 190 ASW
12 pc. 102807 Ballast 10 kg ASW
2 pc. 103040 Lateral complete ASW
1 pc. 102587 Center part ASW galv.

Note

Follow Instructions for Use!

Technical Data

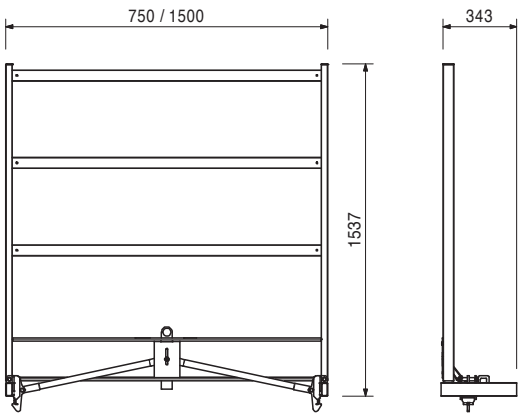
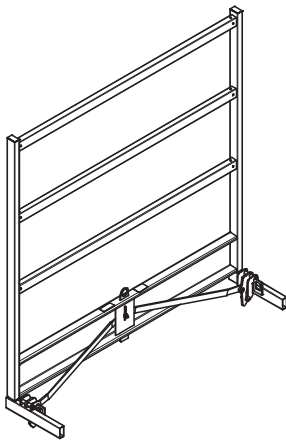
Permissible load 100 kg/m².



Item no.	Weight kg
118331	13.500
118323	18.000

Handrail Units SD
Handrail Unit SD 75
Handrail Unit SD 150

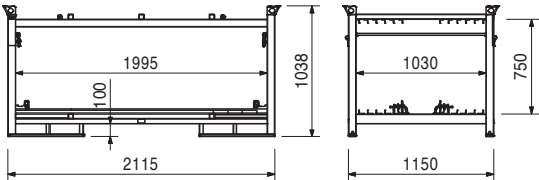
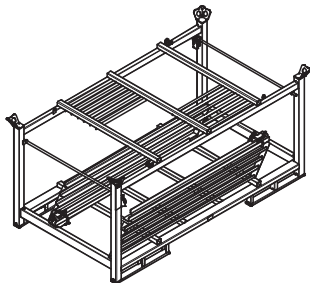
For assembling a Guardrail on a casting segment with SKYDECK. Assembling in a rectangular angle on top of the Main Beams.



126630	123.000
--------	---------

Pallet Handrail Unit SD 75
For stacking and transportation of 10 SKYDECK Handrail Units SD 75.

Note
Follow Instructions for Use!
Technical Data
Permissible load-bearing capacity 150 kg.



Item no.	Weight kg
126580	134.000

Pallet Handrail Unit SD 150

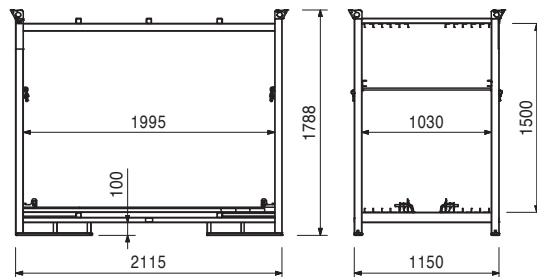
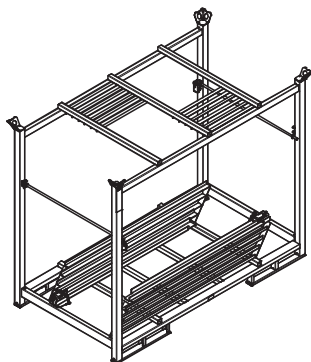
For stacking and transportation of 10 SKYDECK Handrail Units SD 150.

Note

Follow Instructions for Use!

Technical Data

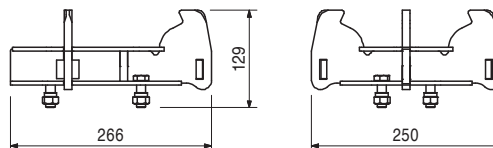
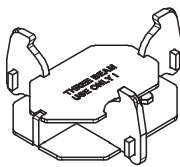
Permissible load-bearing capacity 200 kg.



118622	4.870
--------	-------

Transition Prophead SDSK

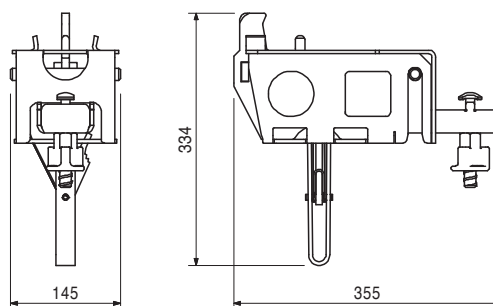
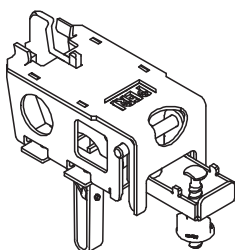
For the rectangular change of the direction of the Main Beam SLT in the standard application with Prophead SSK.



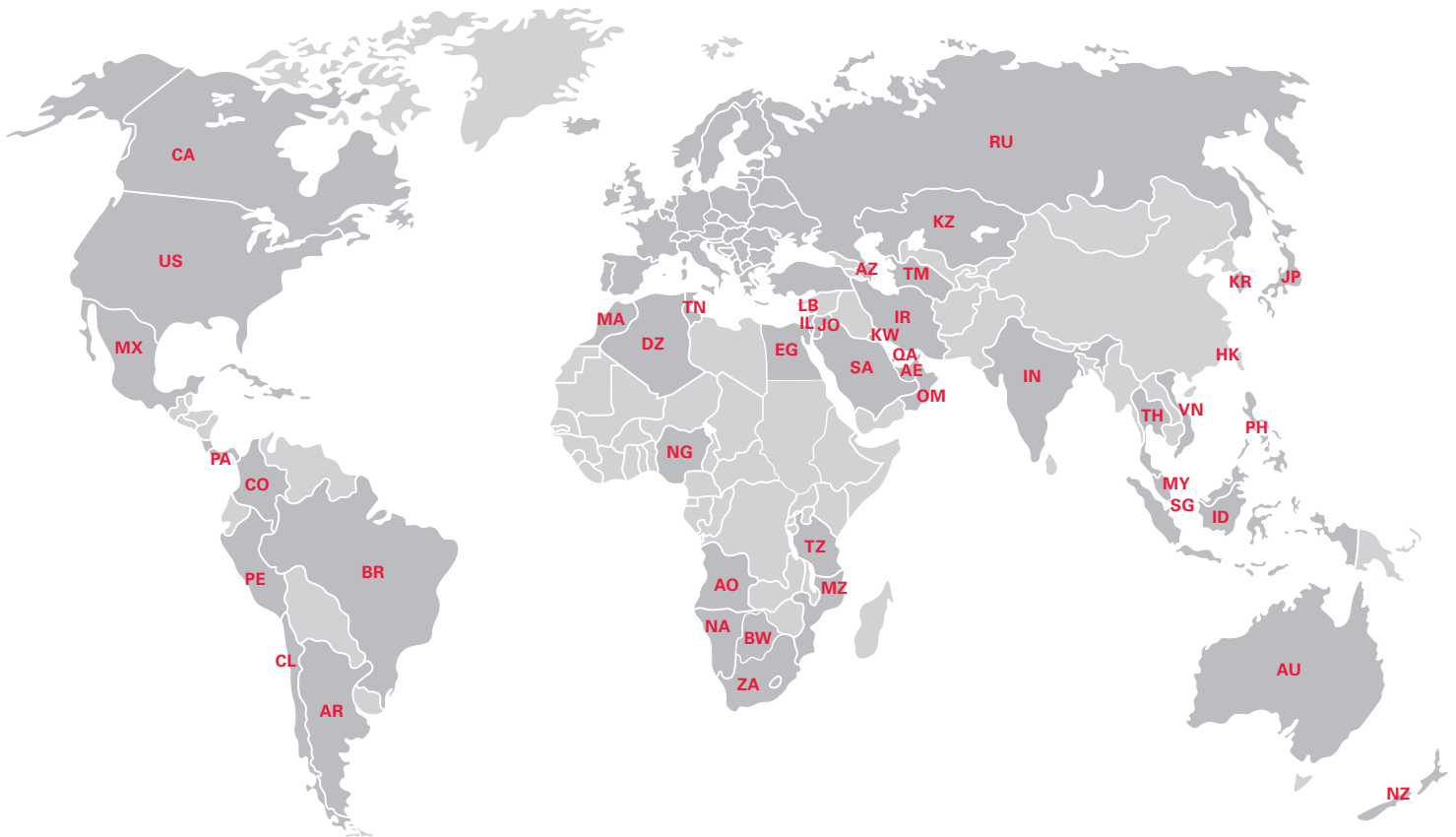
127620	6.770
--------	-------

Transition Head SDFK

For the rectangular change of the direction of the Main Beam SLT in the standard application with Drophead SFK.



PERI International



North America

- CA** Canada
PERI Formwork Systems, Inc.
www.peri.ca
- MX** Mexico
PERI Cimbras y Andamios, S.A. de C.V.
www.peri.com.mx
- PA** Panama
PERI Panama Inc.
www.peri.com.pa
- US** USA
PERI Formwork Systems, Inc.
www.peri-usa.com

South America

- AR** Argentina
PERI S.A.
www.peri.com.ar
- BR** Brazil
PERI Formas e Escoramentos Ltda.
www.peribrasil.com.br
- CL** Chile
PERI Chile Ltda.
www.peri.cl
- CO** Colombia
PERI S.A.S.
www.peri.com.co
- PE** Peru
PERI Peruana S.A.C.
www.peri.com.pe

Africa

- AO** Angola
Pericofragens, Lda.
www.peri.pt
- DZ** Algeria
S.A.R.L. PERI
www.peri.dz
- BW** Botswana
PERI (Proprietary) Limited
www.peri.co.bw
- EG** Egypt
Egypt Branch Office
www.peri.com.eg
- MA** Morocco
PERI S.A.
www.peri.ma
- MZ** Mozambique
PERI (Pty.) Ltd.
www.peri.co.mz
- NA** Namibia
PERI (Pty.) Ltd.
www.peri.na
- NG** Nigeria
PERI Nigeria Ltd.
www.peri.ng
- TN** Tunisia
PERI S.A.U.
www.peri.es
- TZ** Tanzania
PERI Formwork and Scaffolding Ltd
www.peritanzania.com
- ZA** South Africa
PERI Formwork Scaffolding (Pty) Ltd
www.peri.co.za

Asia

- AE** United Arab Emirates
PERI (L.L.C.)
www.perime.com
- AZ** Azerbaijan
PERI Representative Office
www.peri.com.tr
- HK** Hong Kong
PERI (Hong Kong) Limited
www.perihk.com
- ID** Indonesia
PT Beton Perkasa Wijaksana
www.betonperkasa.com
- IL** Israel
PERI F.E. Ltd.
www.peri.co.il
- IN** India
PERI (India) Pvt Ltd
www.peri.in
- IR** Iran
PERI Persa. Ltd.
www.peri.ir
- JO** Jordan
PERI GmbH – Jordan
www.peri.com
- JP** Japan
PERI Japan K.K.
www.perijapan.jp
- KR** Korea
PERI (Korea) Ltd.
www.perikorea.com
- KW** Kuwait
PERI Kuwait W.L.L.
www.peri.com.kw
- KZ** Kazakhstan
TOO PERI Kazakhstan
www.peri.kz
- LB** Lebanon
PERI Lebanon Sarl
lebanon@peri.de
- MY** Malaysia
PERI Formwork Malaysia Sdn. Bhd.
www.perimalaysia.com
- OM** Oman
PERI (L.L.C.)
www.perime.com
- PH** Philippines
PERI-Asia Philippines, INC.
www.peri.com.ph
- QA** Qatar
PERI Qatar LLC
www.peri.qa
- SA** Saudi Arabia
PERI Saudi Arabia Ltd.
www.peri.com.sa
- SG** Singapore
PERI Asia Pte Ltd
www.periasia.com
- TM** Turkmenistan
PERI Kalıp ve İşkeleleri
www.peri.com.tr
- TH** Thailand
Peri (Thailand) Co., Ltd.
www.peri.co.th
- VN** Vietnam
PERI ASIA PTE LTD
www.peri.com.vn



PERI GmbH
Formwork Scaffolding Engineering
 Rudolf-Diesel-Strasse 19
 89264 Weissenhorn
 Germany
 Tel. +49 (0)7309.950-0
 Fax +49 (0)7309.951-0
 info@peri.com
 www.peri.com



Oceania

AU Australia
 PERI Australia Pty. Ltd.
 www.periaus.com.au

NZ New Zealand
 PERI Australia Pty. Limited
 www.peri.co.nz

DE Germany
 PERI GmbH
 www.peri.de

DK Denmark
 PERI Danmark A/S
 www.peri.dk

EE Estonia
 PERI AS
 www.peri.ee

ES Spain
 PERI S.A.U.
 www.peri.es

FI Finland
 PERI Suomi Ltd. Oy
 www.perisuomi.fi

FR France
 PERI S.A.S.
 www.peri.fr

GB United Kingdom
 PERI Ltd.
 www.peri.ltd.uk

GR Greece
 PERI Hellas Ltd.
 www.perihellas.gr

HR Croatia
 PERI oplate i skele d.o.o.
 www.peri.com.hr

HU Hungary
 PERI Kft.
 www.peri.hu

IR Ireland
 Siteserv Access & Formwork
 www.siteservaccess.ie

IS Iceland
 Armar ehf.
 www.armor.is

IT Italy
 PERI S.r.l.
 www.peri.it

LT Lithuania
 PERI UAB
 www.peri.lt

LU Luxembourg
 N.V. PERI S.A.
 www.peri.lu

LV Latvia
 PERI SIA
 www.peri-latvija.lv

NL Netherlands
 PERI B.V.
 www.peri.nl

NO Norway
 PERI Norge AS
 www.peri.no

PL Poland
 PERI Polska Sp. z o.o.
 www.peri.com.pl

PT Portugal
 Pericofragens Lda.
 www.peri.pt

RO Romania
 PERI România SRL
 www.peri.ro

RS Serbia
 PERI oplate d.o.o.
 www.peri.rs

RU Russia
 OOO PERI
 www.peri.ru

SE Sweden
 PERI Sverige AB
 www.peri.se

SI Slovenia
 PERI oplate i skele d.o.o
 www.peri.com.hr

SK Slovakia
 PERI spol. s. r.o.
 www.peri.sk

TR Turkey
 PERI Kalıp ve İskeleleri
 www.peri.com.tr

UA Ukraine
 TOW PERI
 www.peri.ua

Europe

AL Albania
 PERI Kalıp ve İskeleleri
 www.peri.com.tr

AT Austria
 PERI Ges.mbh
 www.peri.at

BA Bosnia and Herzegovina
 PERI oplate i skele d.o.o
 www.peri.com.hr

BE Belgium
 N.V. PERI S.A.
 www.peri.be

BG Bulgaria
 PERI Bulgaria EOOD
 www.peri.bg

BY Belorussia
 IOOO PERI
 www.peri.by

CH Switzerland
 PERI AG
 www.peri.ch

CZ Czech Republic
 PERI spol. S r.o.
 www.peri.cz

**The optimal System
for every Project and
every Requirement**



Wall Formwork



Column Formwork



Slab Formwork



Climbing Systems



Bridge Formwork



Tunnel Formwork



Shoring Systems



Construction Scaffold



Facade Scaffold



Industrial Scaffold



Access



Protection Scaffold



Safety Systems



System-Independent Accessories



Services



PERI GmbH
Formwork Scaffolding Engineering
 Rudolf-Diesel-Strasse 19
 89264 Weissenhorn
 Germany
 Tel. +49 (0) 7309.950-0
 Fax +49 (0) 7309.951-0
 info@peri.com
 www.peri.com